

## How to Build the Small Flock Chicken House

Description: This is a small house for two to six full size chickens. It has two laying nest boxes, ventilated roosting area and a secure door to an outside pen or yard that can be closed at night. The nest boxes can be accessed from outside the fenced in area and a door in the side of the house allows easy cleanout. The back top panel also is hinged to allow easy access.

Before buying any wood or hardware please read through all directions. There are many places you can substitute wood you may have on hand or make small design changes.

### Tools

Skil Saw  
Handsaw  
Square

Saber Saw  
Screw Gun  
Tape measure

### Materials

2 sheets 1/2 4' x 8' acx plywood  
1 piece 1/2 " 15" x 48" acx plywood

(Note on plywood: You may use any grade of plywood or boards you wish. I recommend using a plywood that has a finished side for easy painting. Be sure when you make your cuts that you remember to plan for the finished side to be out. Also when buying plywood, you can have the lumberyard cut the first sheet in half and make all the straight cuts on a panel saw. For the extra 15" x 48" piece you can usually find a scrap in the yard close to that size and have it cut down. You will have to cut out the sides at home with a skill saw or saber saw.)

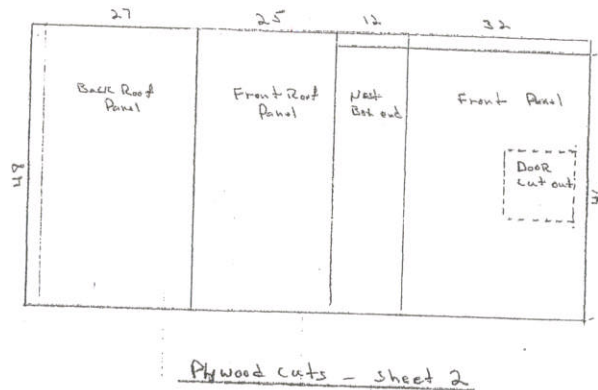
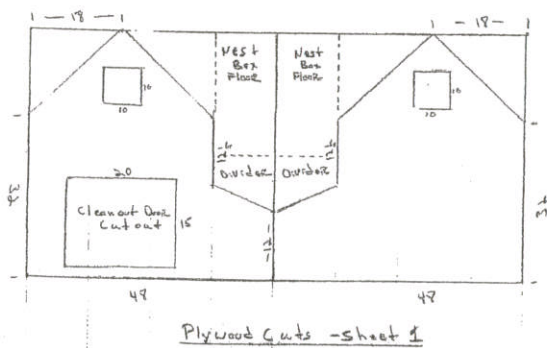
2 2"x4"x8' construction grade redwood or cedar  
3 2" x 2" x 8' construction grade redwood or cedar  
3 1"x 1" x 8' trim wood  
1 lb 1 1/4" sheetrock screws  
2 1 1/8 x 4' dowels  
4' 1" x 2" welded galvanized wire  
2 1" barrel bolts

2" x 48" strip of door screen  
Fence staples  
2 1/8 plexiglass 12" x 12"  
silicone glue  
2 3" strap hinges  
6 1 1/2 " flat galvanized hinges

## Procedure

Cut out the plywood pieces (see cut sheet diagram) You can usually get your lumberyard to make most of these cuts for a small charge.

## Build the side walls



Mark the window and cleanout door openings as per diagram.

Cut door and window openings by carefully dropping a circular saw into the lines and sawing almost to corners (You can also use a saber saw for this). Finish the cuts with a handsaw keeping the cuts on the main piece of plywood clean. Save the cutout from the cleanout door for later use.

Cut one two by four in half and screw plywood side to it. You may want to cut it so the angle matches up to side. Measure distance from bottom of two by four to bottom of leg and match second leg to it. Screw this on as well.

Add a 2"x2" piece on each side on the bottom between the 2" x 4" legs.

Carefully run a bead of silicone glue about a half inch from the edge of window opening and press plexiglass on it squarely. Set aside for glue to dry

Repeat this procedure for other side.

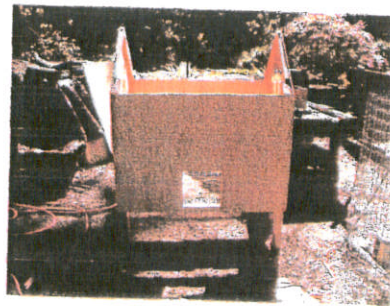
Prepare front wall

Carefully cut out door for chickens to enter starting pattern 1 1/2 inches from bottom using the same technique as in windows and cleanout door.

Connect two sides together with front wall.

Add 2" x 2" reinforcement to bottom in between legs.

Add 2" x 2" reinforcement directly below back wall.



Square up building and cut galvanized welded wire to fit on reinforcement along edges and nail in with fence staples.

Measure and add roost dowel just below window. Add second dowel at roof peak.  
Add one more 2" x 2" at back just above where nestbox sides flair out. This should be the same length as dowels.  
Reinforce all edges with 1" x 1" trim wood.

Screw on front roof panel bringing edge all the way to top of sides. Screw on back panel setting it down all the way on where the nest boxes will be leaving approximately a one inch gap for the vent.

Staple a two inch strip of screen to the back panel and bend the upper part so it will fit snugly under the back roof panel.

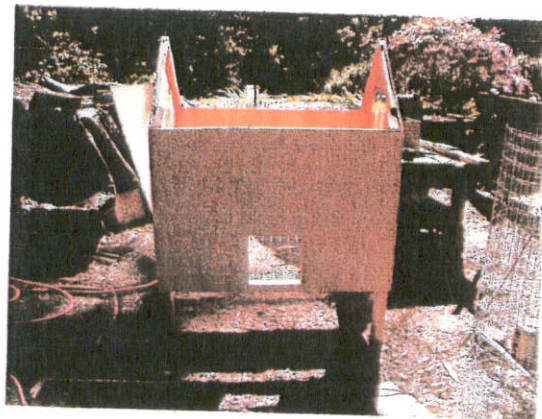
Attach the back roof panel using two strap hinges.

Add back panel enclosing nestbox. Add nest box dividers. The scraps leftover from the side cutouts are the perfect size and angle but will require some trimming.

Attach the nest box cover with two small flat hinges. If you live in a rural area I usually add a hook and eye to keep the lid secure.

Add the side cleanout door using two small flat hinges at the bottom. I usually put two small barrel bolts on the sides near the top to keep the door closed.

Add the front chicken door with two flat hinges. If I am putting the chicken house outside a fenced enclosure which will enable you to collect eggs and clean without have to be in the enclosure, I frame the chicken wire fence right around the chicken door and mount the door on the trim. (see diagram)



## Finishing up and painting

Now is the time to add trim around the window and even little planter boxes if you want a very charming house. Be sure to glue these on as the plexiglass overlaps the opening on the inside and nailing or screwing will shatter the window.

Sand all edges and paint only on the outside with an exterior grade latex house paint or you can clear finish with a polyurethane coat. I usually use two coats minimum.

